



G2 OPTIMA PLUS TROUBLESHOOTING FLOW CHART

ITEMS TO HAVE ON HAND:

Item#	Order#	Description
5	# 8721	Solenoid (EBV-136A)
3	# 8697	Module-Closet (EBV-129A-C)
3	# 8698	Module-Urinal (EBV-129A-U)
1	# 8715	Button (EBV-130A)
7	# 8285	Diaphragm -Closet (EBV-1020A)
7	# 8137	Diaphragm -Urinal (EBV-1022A)
	# 34727	Strap Wrench
	# 32737	AA Alkaline Batteries
-		Flat Screwdriver
-		7/64 Allen Wrench

**PROBLEM: G2 UNIT
DOES NOT FLUSH AT ALL**

YES

Press button (1).
Did you hear two clicks,
2 seconds apart?

Assuming that water is on,
shut water off, and inspect,
clean, or replace diaphragm kit
(7). Make sure base plate (6)
is free of debris.

NO

Stand in front of the unit. Press
and hold the button (1) for at
least 40 seconds. Release button.

NO

Do you see a flashing
red light while standing
in front of the unit?

Replace batteries. Light
should now flash. If not,
replace blue module (3).

YES

Remove cover (2). Did the
red light start to flash?

Replace button (1).

YES

The batteries are GOOD. Remove
cover (2). Disconnect solenoid (5)
from the back of the blue module (3).
Plug a new solenoid into the module
(leave solenoid on top of module.)
Step away from the unit.

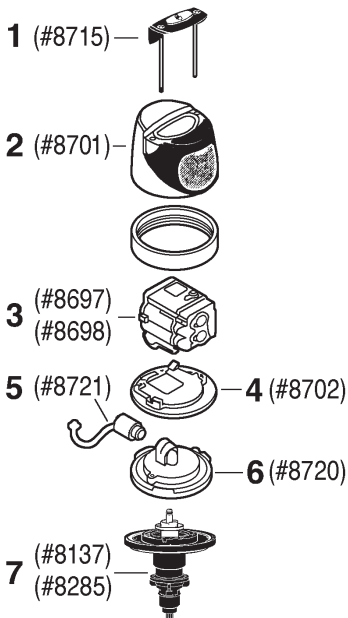
YES

Did the new solenoid (5)
click twice, 2 seconds apart?

Turn off water at the stop. Remove cover (2). Remove blue module (3). Unscrew solenoid (5) from the inner cover. Make sure both large and small O-rings have been removed from the solenoid mounting hole. Remove black cap from the new solenoid. Ensure that both large and small O-rings are in place. Screw new solenoid (5) into the inner cover hand tight. Install solenoid connector into the back of the module. Reinstall cover (2). Press button to activate new solenoid. Turn water back on. Press button (1) to flush bowl. If unit continues to flush, go to page 2.

NO

Replace blue module (3). Remove
magnet. Connect existing solenoid
(5). Put back cover (2). Press
button (1) to activate flush.



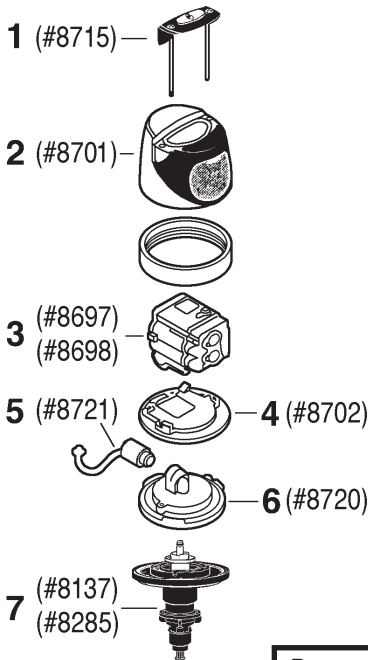
CALL FOR TECH ASSISTANCE!
1-800-442-6622

Corporate • 412-781-8181 • 817 Main Street • Pittsburgh, PA 15215
Distribution • 412-781-9100 • 1003 Main Street • Pittsburgh, PA 15215

G2 OPTIMA PLUS TROUBLESHOOTING FLOW CHART

ITEMS TO HAVE ON HAND:

Item#	Order#	Description
5	# 8721	Solenoid (EBV-136A)
3	# 8697	Module-Closet (EBV-129A-C)
3	# 8698	Module-Urinal (EBV-129A-U)
1	# 8715	Button (EBV-130A)
7	# 8285	Diaphragm -Closet (EBV-1020A)
7	# 8137	Diaphragm -Urinal (EBV-1022A)
	# 34727	Strap Wrench
	# 32737	AA Alkaline Batteries
-		Flat Screwdriver
-		7/64 Allen Wrench



Clean, or replace diaphragm kit (7). Make sure base plate (6) is free of debris.

If the solenoid (5) has been serviced, hand tighten solenoid, check for missing or double O-rings on the top of the solenoid.

Replace batteries, alkaline only. Ensure batteries are oriented correctly. Light should now flash. If not, replace blue module (3).

Remove blue module (3). Unscrew solenoid (5) from the inner cover. Make sure both large and small O-rings have been removed from the solenoid mounting hole. Remove black cap from the new solenoid. Ensure that both large and small O-rings are in place. Screw new solenoid (5) into the inner cover (2) hand tight. Install solenoid connector into the back of the module (3). Reinstall cover. Press button (1) to activate new solenoid. Turn water back on. Press button to flush bowl. If unit does not flush, check for multiple O-rings. If unit still continues to flush, repeat this procedure.

PROBLEM: G2 UNIT IS CONTINUOUSLY FLUSHING

YES Turn water off at the stop. Press button (1). Did you hear two clicks, 2 seconds apart?

NO Stand in front of the unit. Press and hold the button (1) for at least 40 seconds. Release button.

NO Do you see a flashing red light while standing in front of the unit?

YES The batteries are GOOD. Remove cover. Disconnect solenoid (5) from the back of the blue module (3). Plug a new solenoid into the module (leave solenoid on top of module.) Step away from the unit.

YES Did the new solenoid (5) click twice, 2 seconds apart?

NO Replace blue module (3). Remove magnet. Replace cover. Press button to activate flush.

**CALL FOR TECH ASSISTANCE!
1-800-442-6622**

Corporate • 412-781-8181 • 817 Main Street • Pittsburgh, PA 15215
 Distribution • 412-781-9100 • 1003 Main Street • Pittsburgh, PA 15215

G2 OPTIMA PLUS TROUBLESHOOTING FLOW CHART

ITEMS TO HAVE ON HAND:

Item#	Order#	Description
5	# 8721	Solenoid (EBV-136A)
3	# 8697	Module-Closet (EBV-129A-C)
3	# 8698	Module-Urinal (EBV-129A-U)
1	# 8715	Button (EBV-130A)
7	# 8285	Diaphragm -Closet (EBV-1020A)
7	# 8137	Diaphragm -Urinal (EBV-1022A)
	# 34727	Strap Wrench
	# 32737	AA Alkaline Batteries
-		Flat Screwdriver
-		7/64 Allen Wrench

**PROBLEM: G2 UNIT
FLUSHES WITH
BUTTON, BUT NOT IN
AUTOMATIC MODE**

Stand in front of the unit. Press and hold the button (1) for at least 40 seconds. Release button. The red light will now flash.

Does the red light continue to flash when you step away?

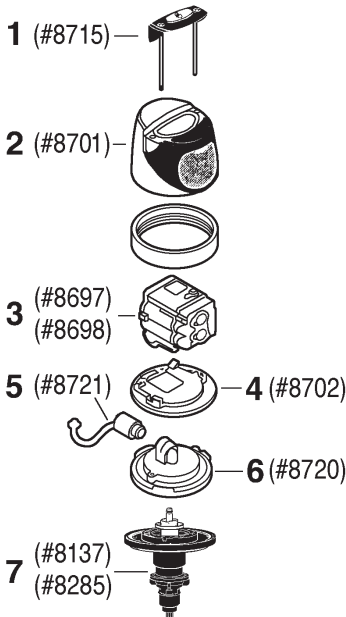
Replace blue module (3).

Confirm range is 18"-24" and has not been tampered with.

If range has been tampered with, module damage may occur.

Call for assistance:
1-800-442-6622

Remove cover (2). Look inside to see if the black rubber piece is still mounted behind the front lens cover. Replace if missing.



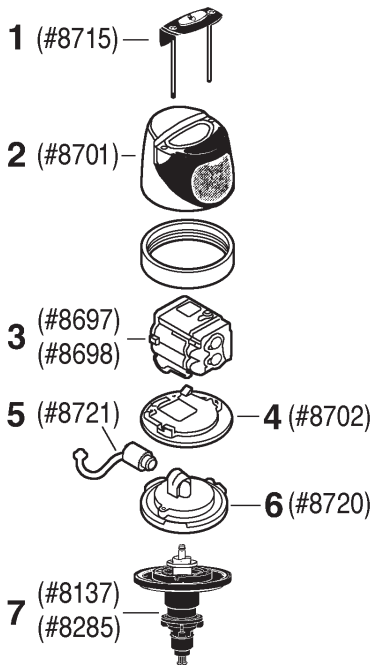
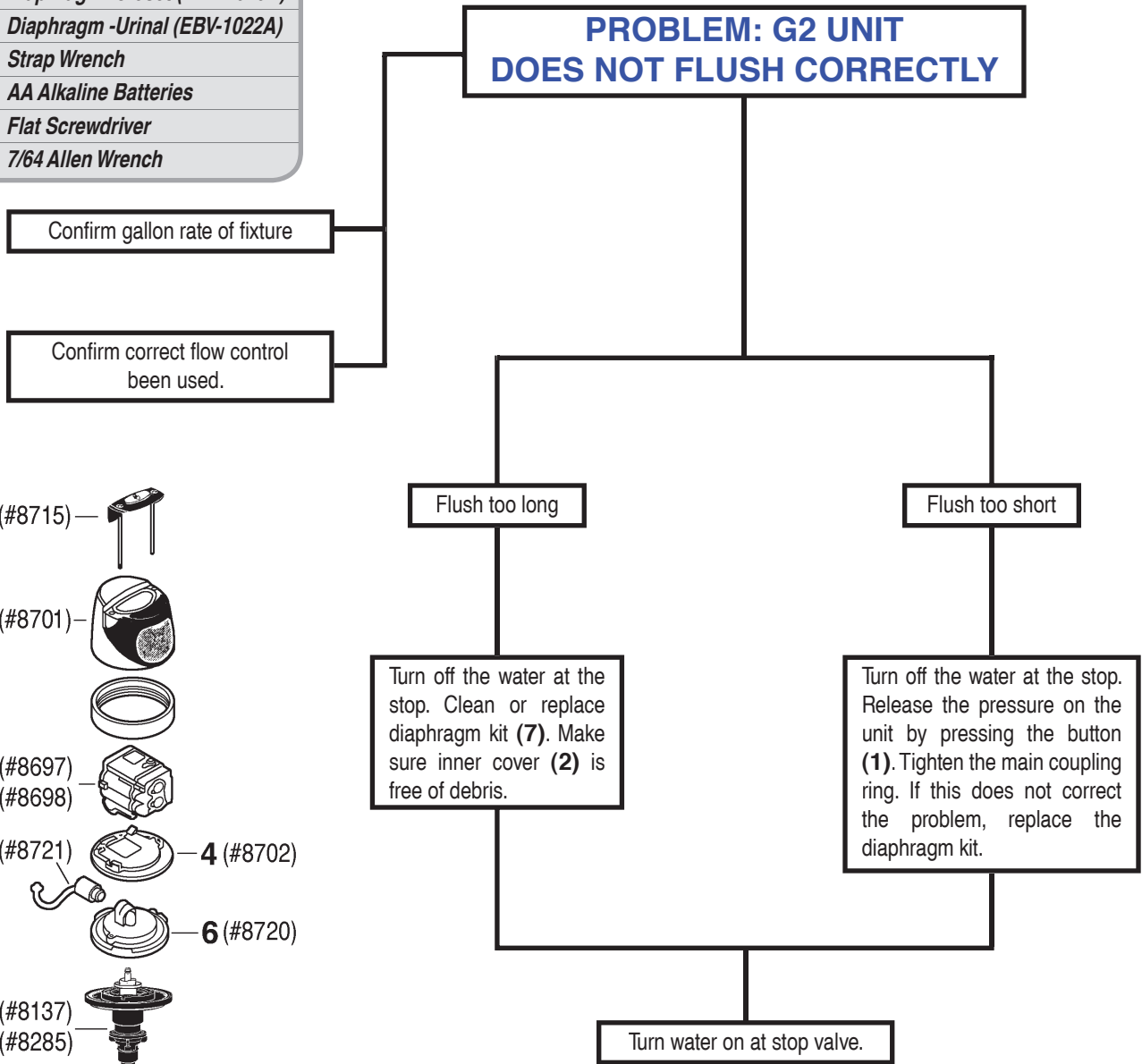
**CALL FOR TECH ASSISTANCE!
1-800-442-6622**

Corporate • 412-781-8181 • 817 Main Street • Pittsburgh, PA 15215
Distribution • 412-781-9100 • 1003 Main Street • Pittsburgh, PA 15215

G2 OPTIMA PLUS TROUBLESHOOTING FLOW CHART

ITEMS TO HAVE ON HAND:

Item#	Order#	Description
5	# 8721	Solenoid (EBV-136A)
3	# 8697	Module-Closet (EBV-129A-C)
3	# 8698	Module-Urinal (EBV-129A-U)
1	# 8715	Button (EBV-130A)
7	# 8285	Diaphragm -Closet (EBV-1020A)
7	# 8137	Diaphragm -Urinal (EBV-1022A)
	# 34727	Strap Wrench
	# 32737	AA Alkaline Batteries
-		Flat Screwdriver
-		7/64 Allen Wrench



**CALL FOR TECH ASSISTANCE!
1-800-442-6622**

Corporate • 412-781-8181 • 817 Main Street • Pittsburgh, PA 15215
 Distribution • 412-781-9100 • 1003 Main Street • Pittsburgh, PA 15215