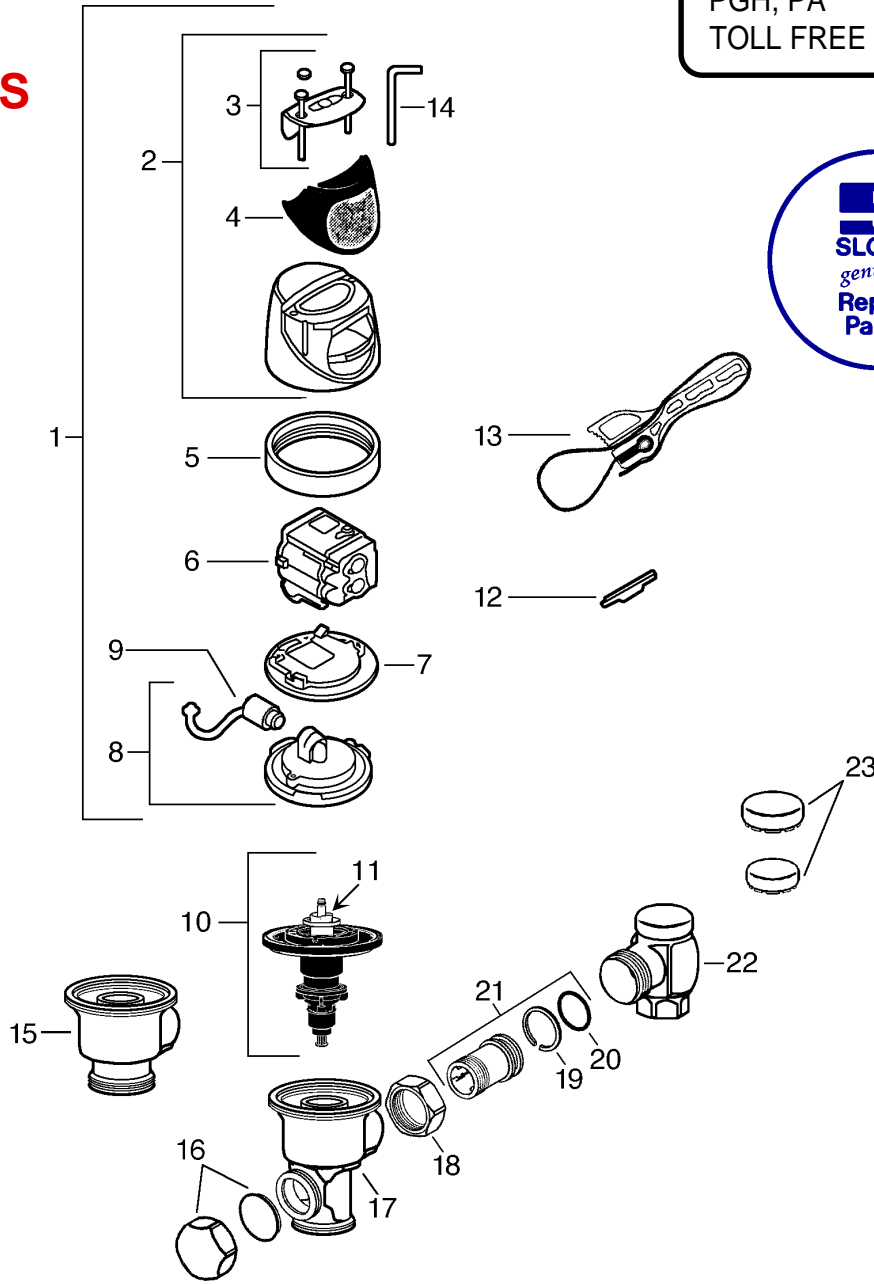


CALL EQUIPARTS !
 PGH, PA 412-781-9100
 TOLL FREE 800-442-6622

**SLOAN G2
 OPTIMA PLUS**



EQUIPARTS MASTER REPAIR PARTS DISTRIBUTOR

| | | | | | | | | |
|---|--------|---|----|--------|---|----|----------------------------|--|
| 1 | # 8696 | G2 COVER/RING/SENSOR ASSY - CLOSET | 8 | # 8720 | BASE W/SOLENOID | 13 | # 34727 | EC STRAP WRENCH |
| | # 8699 | G2 COVER/RING/SENSOR ASSY. - URINAL | 9 | # 8721 | G2 SOLENOID ONLY | 14 | # 37171 | 7/64" HEX WRENCH |
| | | <i>Also Available to Fit Zurn</i> | 10 | # 8695 | FLEX TUBE DIAPHRAGM ASSY. (Includes 0.5 gpf volume regulator) | 15 | # 8461 | VALVE BODY - LESS OPENING |
| 2 | # 8701 | COVER ASSY. | | # 8137 | FLEX TUBE DIAPHRAGM ASSY. (Includes 1.0 and 1.5 gpf volume regulator) | 16 | # 8396 | HANDLE CAP - SOLID |
| 3 | # 8715 | VERRIDE BUTTON ASSY. (includes screws & hex wrench) | | # 8285 | FLEX TUBE DIAPHRAGM ASSY. (Includes 1.6 and 3.5 gpf volume regulator) | 17 | # SP795 | VALVE BODY |
| | # 8707 | SCREWS AND HEX WRENCH ONLY | | # 8710 | FLEX TUBE DIAPHRAGM ASSY. (Includes 2.4 gpf volume regulator) | 18 | # 8040 | CP STOP COUPLING |
| 4 | # 8705 | LENS WINDOW COVER | 11 | # 8703 | WHITE VOLUME REGULATOR | 19 | # 8038 | LOCK RING |
| 5 | # 8421 | LOCKING RING | | # 8704 | GREEN VOLUME REGULATOR | 20 | # 8037 | "O" RING |
| 6 | # 8697 | G2 ELECTRONIC MODULE-CLOSET | | # 8706 | BLACK VOLUME REGULATOR | 21 | # 8039 | ADJ. TAILPIECE 2-1/16" (OTHER LENGTHS AVAILABLE) |
| | # 8698 | G2 ELECTRONIC MODULE - URINAL | | # 8708 | BLUE VOLUME REGULATOR | 22 | <i>Call for assistance</i> | CONTROL STOP |
| 7 | # 8702 | PLASTIC SUB BASE | 12 | # 8711 | RANGE TOOL | 23 | # 8322 | 1" VP STOP CAP |
| | | | | | | | # 8321 | 3/4" VP STOP CAP |

TROUBLESHOOTING AND MAINTAINING THE G2 OPTIMA PLUS FLUSHOMETER

- 1 PROBLEM:** SENSOR FLASHES CONTINUOUSLY ONLY WHEN USER STEPS WITHIN RANGE
CAUSE: UNIT IN START-UP MODE
SOLUTION: NO PROBLEM. THIS FEATURE IS ACTIVE FOR THE FIRST TEN MINUTES OF OPERATION
- 2 PROBLEM:** VALVE DOESN'T FLUSH; SENSOR NOT PICKING UP USER
CAUSE: RANGE TOO SHORT
SOLUTION: INCREASE THE RANGE
- 3. PROBLEM:** VALVE DOESN'T FLUSH; SENSOR PICKING UP OPPOSITE WALL OR SURFACE, OR ONLY FLUSHES WHEN SOMEONE WALKS BY. RED LIGHT FLASHES CONTINUOUSLY FOR FIRST TEN MINUTES EVEN WITH NO ONE IN FRONT OF THE SENSOR
CAUSE: RANGE TOO LONG
SOLUTION: SHORTEN RANGE
- 4. PROBLEM:** VALVE DOES NOT FLUSH EVEN AFTER ADJUSTMENT
CAUSE A) RANGE ADJUSTMENT POTENTIOMETER SET AT FULL "MAX" OR FULL "MIN" SETTING
 B) BATTERIES COMPLETELY USED UP
 C) PROBLEM WITH ELECTRONIC SENSOR MODULE
SOLUTION: A) READJUST POTENTIOMETER AWAY FROM FULL "MAX" OR "MIN" SETTING
 B) REPLACE BATTERIES
 C) CALL EQUIPARTS TO REPLACE ELECTRONIC SENSOR MODULE
- 5 PROBLEM:** UNIT FLASHES FOUR QUICK TIMES WHEN USER STEPS WITHIN RANGE.
CAUSE: BATTERIES LOW
SOLUTION: REPLACE BATTERIES
- 6 PROBLEM:** VALVE DOES NOT SHUT OFF
CAUSE: A) BY-PASS ORIFICE IN DIAPHRAGM IS CLOGGED WITH DIRT OR DEBRIS, OR BY-PASS IS CLOGGED BY AN INVISIBLE GELATINOUS FILM DUE TO "OVERTREATED" WATER.
 B) DIRT OR DEBRIS FOULING STEM OR FLEX TUBE DIAPHRAGM.
 C) O-RING ON STEM OR FLEX TUBE DIAPHRAGM IS DAMAGED OR WORN
 D) PROBLEM WITH ELECTRONIC SENSOR MODULE
SOLUTION: A) REMOVE FLEX TUBE DIAPHRAGM AND WASH UNDER RUNNING WATER.
NOTE: SIZE OF ORIFICE IN BY-PASS IS OF UTMOST IMPORTANCE FOR THE PROPER METERING OF WATER BY THE VALVE. EQUIPARTS RECOMMENDS THAT YOU **DO NOT ENLARGE OR DAMAGE THIS ORIFICE.** REPLACE INSIDE PARTS ASSEMBLY IF CLEANING DOES NOT CORRECT THE PROBLEM.
 B) REMOVE INSIDE PARTS ASSEMBLY AND WASH UNDER RUNNING WATER.
 C) REPLACE QUAD SEAL IF NECESSARY
 D) TURN SOLENOID COUNTERCLOCKWISE VERY SLIGHTLY
 E) REPLACE ELECTRONIC MODULE
- 7 PROBLEM:** NOT ENOUGH WATER TO FIXTURE
CAUSE: A) WRONG FLUSH VOLUME REGULATOR INSTALLED IN FLEX TUBE DIAPHRAGM KIT.
 B) WRONG OPTIMA PLUS MODEL INSTALLED; i.e. 1 gpf URINAL INSTALLED ON 3.5 gal. CLOSET FIXTURE.
 C) ENLARGED BYPASS IN DIAPHRAGM.
 D) CONTROL STOP NOT ADJUSTED PROPERLY.
 E) INADEQUATE VOLUME OR PRESSURE AT SUPPLY.
SOLUTION: A) INSTALL THE CORRECT REGULATOR.
 B) REPLACE WITH PROPER OPTIMA PLUS MODEL.
 C) REPLACE FLEX TUBE DIAPHRAGM.
 D) READJUST CONTROL STOP.
 E) INCREASE WATER PRESSURE OR SUPPLY (FLOW) TO VALVE.

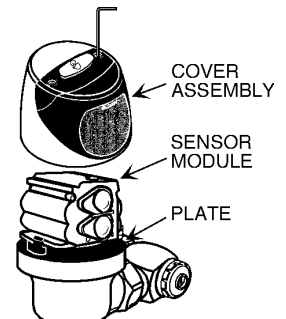
- 8 PROBLEM:** TOO MUCH WATER TO FIXTURE
CAUSE: A) WRONG FLUSH VOLUME REGULATOR INSTALLED IN FLEX TUBE DIAPHRAGM KIT.
 B) CONTROL STOP NOT ADJUSTED PROPERLY
 C) WRONG OPTIMA PLUS MODEL INSTALLED; i.e. 3 gpf MODEL INSTALLED ON 1.0 OR 1.5 gal. URINAL FIXTURE.
 D) DIRT IN DIAPHRAGM BYPASS.
SOLUTION: A) INSTALL THE CORRECT REGULATOR.
 B) READJUST CONTROL STOP
 C) REPLACE WITH PROPER OPTIMA PLUS MODEL.
 D) CLEAN UNDER RUNNING WATER OR REPLACE FLEX TUBE DIAPHRAGM.

BATTERY REPLACEMENT

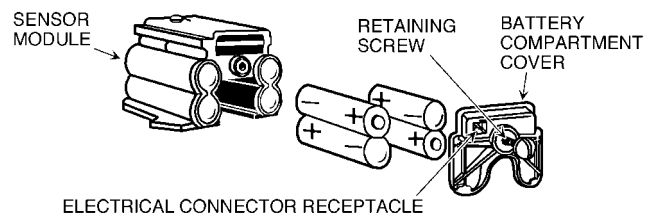
When required, replace batteries with four (4) Alkaline Type AA Batteries.

Note: Water does not have to be turned off to replace batteries.

Loosen the two (2) Screws on top of unit. Remove the complete Cover Assembly. Lift the Sensor Module from its Plate. Unplug the Electrical Connector from Battery Compartment Cover. Loosen the Retaining Screw on Battery Compartment Cover. Install four (4) Alkaline Type AA Batteries exactly as illustrated below.



Install Battery Compartment Cover and secure with Retaining Screw. Make certain that Battery Compartment Cover is fully compressed against Gasket to provide a seal. Do not overtighten. Plug the Electrical Connector into the Battery Compartment Cover. Reinstall the Sensor Module onto the Plate. Reinstall the complete Cover Assembly onto the Plate. Tighten the two (2) Screws on top of the unit.



CARE AND CLEANING INSTRUCTIONS

DO NOT use abrasive or chemical cleaners to clean Flushometers, they may dull the luster and attack the chrome or special decorative finishes. Use ONLY soap and water, then wipe dry with clean cloth or towel. While cleaning the bathroom tile, the Flushometer should be protected from any splattering of cleaner. Acids and cleaning fluids can discolor or remove chrome plating.

**EQUIPARTS IS AN AUTHORIZED
 SLOAN VALVE REPAIR CENTER!
www.sloanrepair.com**

**CALL FOR
 TECHNICAL ASSISTANCE !**