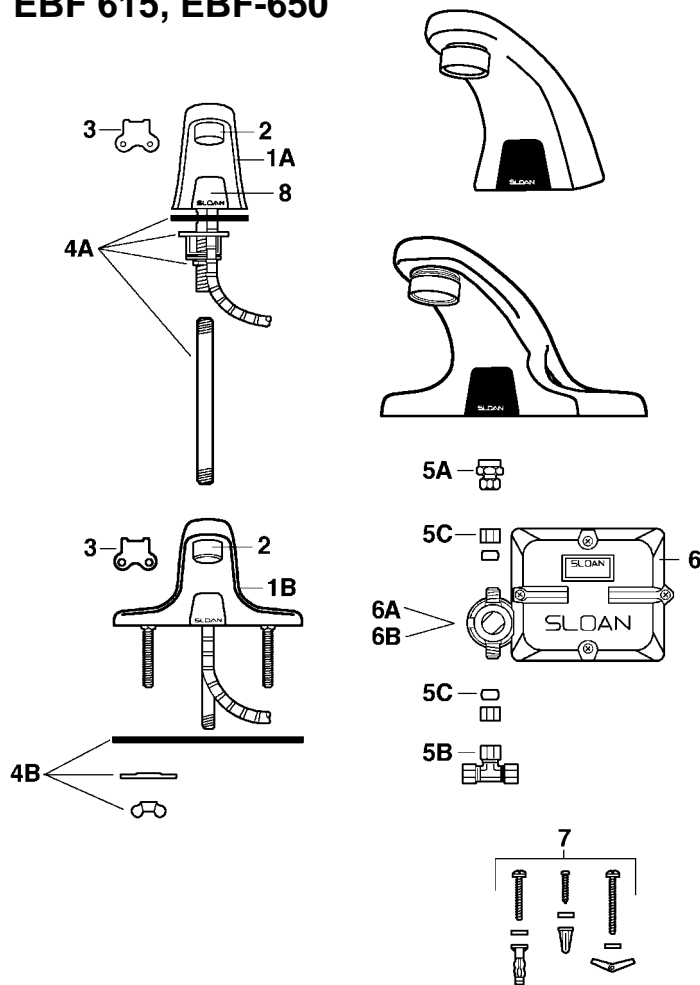


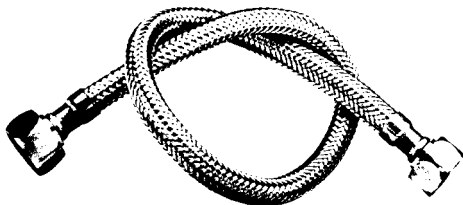
SLOAN

EBF 615, EBF-650



1A	# 54700	Pedestal Faucet Spout & Faucet & Sensor Assembly (EBF-615)
1B	# 54701	Faucet Spout & Sensor Assembly (EBF-650)
2	# 59173 # 54683 # 54902	Spray Head w/Key - Male 0.56 gpm Aerator Spray Head w/Key - Male 2.2 gpm Laminar Flow Spray Head - Male 2.2 gpm
3	# 54693	Key Only
4A	# 54703	Mounting Kit for EBF-615
4B	# 54684	Mounting Kit for EBF-650
5A	# 54685	1/8" NPT Pipe to 3/8" Compression
5B	# 54685	Tee Comp. Fitting/
5C	# 00000	Solenoid Supply Kit (NOT SOLD)
6	# 54325	Control Module Assy.
6A	# 54335	Solenoid Replacement Kit includes Solenoid Body, Solenoid Enclosure, and Solenoid Filter Cap.
6B	# 8578	Solenoid Filter Replacement Kit includes Filter Screen Assembly and "O" Ring
7	# 54686	Mounting Hardware
8	# 57970	Sensor Replacement Kit includes Cable Assembly, Retainer for PC Board Assembly, and housing for Sensor Window

NO-BURST FLEXIBLE STAINLESS STEEL PLUMBING CONNECTORS



FAUCET CONNECTIONS

3/8" FEMALE COMPRESSION TO	12"	# 51210
3/8" FEMALE COMPRESSION	16"	# 44741

Most common for electronic faucets

3/8" MALE COMPRESSION TO	12"	# 44527
3/8" FEMALE COMPRESSION	20"	# 44528

CAST BRASS!



INSTITUTIONAL NON-REMOVABLE CHROME GRID STRAINER HEAVY CAST

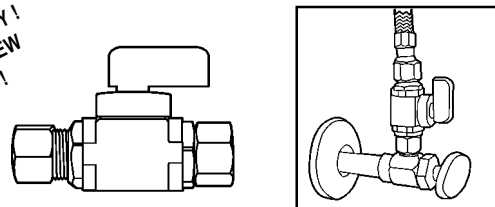
4929

1-1/4" x 6"
17 GAUGE TAILPIECE

A must for every commercial lavatory!

ADD-A-STOP REPAIR VALVE

QUICK & EASY!
JUST SCREW
IT ON!

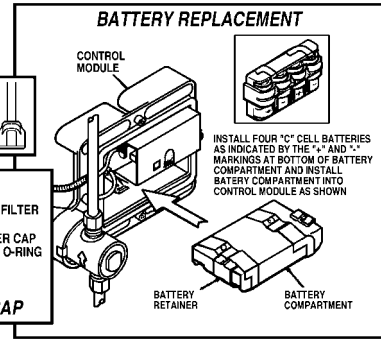
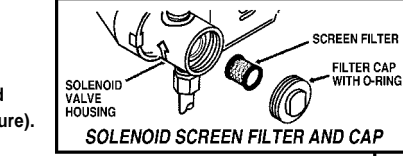
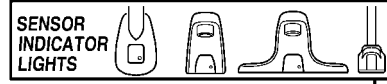


51407

Retrofit style piggybacks existing 3/8" compression stop.
NO NEED TO REPLACE EXISTING STOP!

TROUBLESHOOTING GUIDE FOR EBF-650 SLOAN ELECTRONIC FAUCET

NOTE: Range Potentiometer adjustment screw rotates only 3/4 of a turn (270°). Do not over-rotate!



1. PROBLEM: Sensor troubleshooting LED does not function (red indicator light does not flash during set-up procedure).

CAUSE: No battery power is being supplied to sensor

SOLUTION: Ensure that the batteries are installed properly. Check that the orientation of each battery matches the positive (+) and negative (-) symbols shown in the bottom of the battery compartment. Reinsert the Battery Compartment into Control Module.

CAUSE: Insufficient battery power is being supplied to sensor

SOLUTION: One (or more) of the batteries is "dead". To ensure proper operation, insert four (4) new C-size alkaline batteries. Check that the orientation of each battery matches the positive (+) and negative (-) symbols shown in the bottom of the battery compartment. Reinsert the Battery Compartment into Control Module.

CAUSE: Sensor Cable is not properly inserted

SOLUTION: Disconnect and reconnect Sensor Cable to the Control Module

CAUSE: Sensor range is set at minimum distance

SOLUTION: Increase Sensor range. Use a small phillips screwdriver to turn the potentiometer screw (white screw in a blue base) clockwise.

CAUSE: Control Module assembly is defective

SOLUTION: Replace # 54325 (EBF-60-A) Control Module assembly.

2. PROBLEM: Faucet does not deliver any water when Sensor is activated.

INDICATOR: Solenoid valve produces audible "click"

CAUSE: Water supply valve is closed.

SOLUTION: Open the Supply Stop.

INDICATOR: Solenoid Valve DOES NOT produce an audible "click".

CAUSE: Solenoid lead is not properly connected to the Control Module

SOLUTION: Disconnect and reconnect Solenoid lead to the Control Module.

CAUSE: Batteries are not installed properly.

SOLUTION: Check that the orientation of each battery matches the positive (+) and negative (-) symbols shown in the bottom of the battery compartment. Reinsert the Battery Compartment into Control Module. The troubleshooting LED should flash RED when a user is detected.

3. PROBLEM: Faucet delivers only a slow flow or dribble when Sensor is activated.

CAUSE: Water supply valve is partially closed.

SOLUTION: Completely open the Supply Stop.

CAUSE: Solenoid Filter is clogged

SOLUTION: Remove, clean, and reinsert. Replace #8578 (EBF-1004-A) Solenoid Filter Kit if necessary.

CAUSE: Aerator or Spray head is clogged

SOLUTION: Remove, clean, and reinsert.

4. PROBLEM: Faucet does not stop delivering water or continues to drip after user is no longer detected (automatic shut-off fails even when batteries are removed.)

CAUSE: Solenoid Valve has been connected backwards.

SOLUTION: Disassemble Solenoid Valve compression fittings at both the inlet and the outlet positions. The water should flow from the inlet through the Solenoid Valve to the outlet according to the direction of the arrow shown on the side of the Solenoid Valve. Reconnect the compression fittings in the correct orientation.

CAUSE: Solenoid valve is dirty.

SOLUTION: Backflush by reversing water flow (opposite to the direction shown by the arrow on the side of the Solenoid Valve) through the Solenoid Valve. Reconnect the compression fittings in the correct orientation. Activate faucet.

CAUSE: Solenoid Valve module is defective.

SOLUTION: Replace # 54335 (EBF-62)-A Solenoid Valve Module

5. PROBLEM: The water temperature is too hot or too cold on a faucet connected to hot and cold supply lines with two Back Checks.

CAUSE: Supply Stops are not adjusted properly.

SOLUTION: Adjust Supply Stops.

CAUSE: One Back Check is installed backwards.

SOLUTION: Reinstall Back Check.

Note: For some systems, a thermostatic mixing valve may be required.

CARE AND CLEANING INSTRUCTIONS

DO NOT USE abrasive or chemical cleaners to clean Faucets that may dull the luster and attack the chrome or special decorative finishes. Use ONLY soap and water, then wipe dry with a clean towel or cloth.

When cleaning the bathroom tile, protect the Faucet from any splattering of cleaner. Acids and cleaning fluids can discolor or remove chrome plating